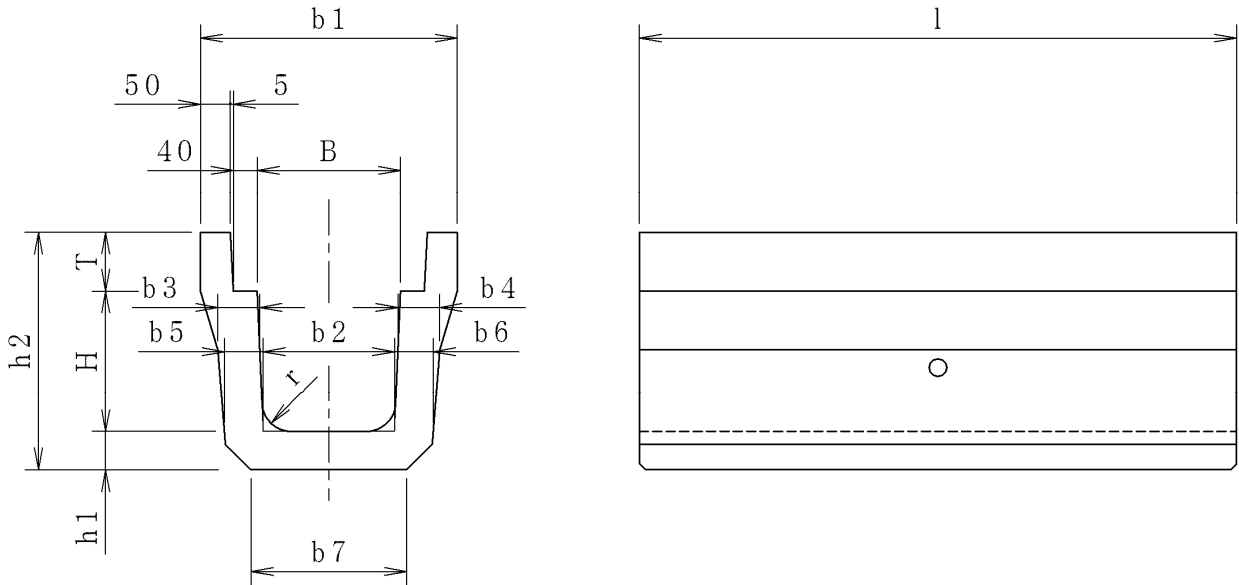


CKU II型



呼び名	寸法 (mm)													参考重量 (kg)		
	B	H	b ₁	b ₂	b ₃	b ₄	b ₅	b ₆	b ₇	h ₁	h ₂	T	l	l=1000	l=2000	
B240-H240	240	240	430	220	70	70	65	65	260	65	405	100	1000	2000	162	324
B240-H360	240	360	430	210	70	80	70	80	300	80	540	100	1000	-	228	-
B300-H300	300	300	490	260	70	80	65	80	300	80	480	100	1000	2000	209	419
B300-H360	300	360	490	260	70	80	70	80	300	80	540	100	1000	-	232	-
B300-H500	300	500	490	260	80	90	80	90	350	90	690	100	1000	-	318	-
B300-H650	300	650	490	250	95	95	95	95	335	95	845	100	1000	-	420	-
B300-H700	300	700	490	240	95	95	95	95	325	95	895	100	1000	-	440	-